

SOLUTION NOTE

**Improve Application Performance and Availability
with Riverbed and Infoblox**



Core network services (CNS) such as DNS, DHCP, IPAM, TFTP, and HTTP are critical network services required in every network. Loss of these services is crippling to nearly all network applications, and yet they are often delivered in an ad hoc manner on general-purpose platforms scattered throughout the organization without centralized management. The increase in the number of IP devices and applications demands a new approach to delivering core network services. At the same time, the trend toward branch server consolidation creates additional challenges for providing highly available, easily managed core network services to regional and branch office users.

Every time a branch office user connects to the network they require DHCP to provide an IP address. Every time a branch office user accesses the Internet, or uses common applications such as e-mail, or logs onto a Windows domain they use DNS. File delivery services such as TFTP and HTTP are crucial for providing IP phones, cameras, and other devices with updated firmware and configurations. Centralizing these core network services in the data center can create problems for end users in branch offices, compromising performance due to WAN latencies, and making remote networks completely unusable should WAN links fail. On the other hand, leaving core network services and the general-purpose servers that support them in the branch poses problems related to security, manageability, and cost.

Together, Infoblox and Riverbed provide organizations with an integrated solution that consolidates core network services with Steelhead appliances to accelerate application performance and increase availability at the branch office while lowering costs. The integrated solution delivers core network services locally at branch offices and provides centralized management that automates repetitive tasks—reducing labor costs and preventing errors and downtime. With the joint Riverbed and Infoblox solution, consolidating core network services as part of a branch office consolidation project is easier and less costly.

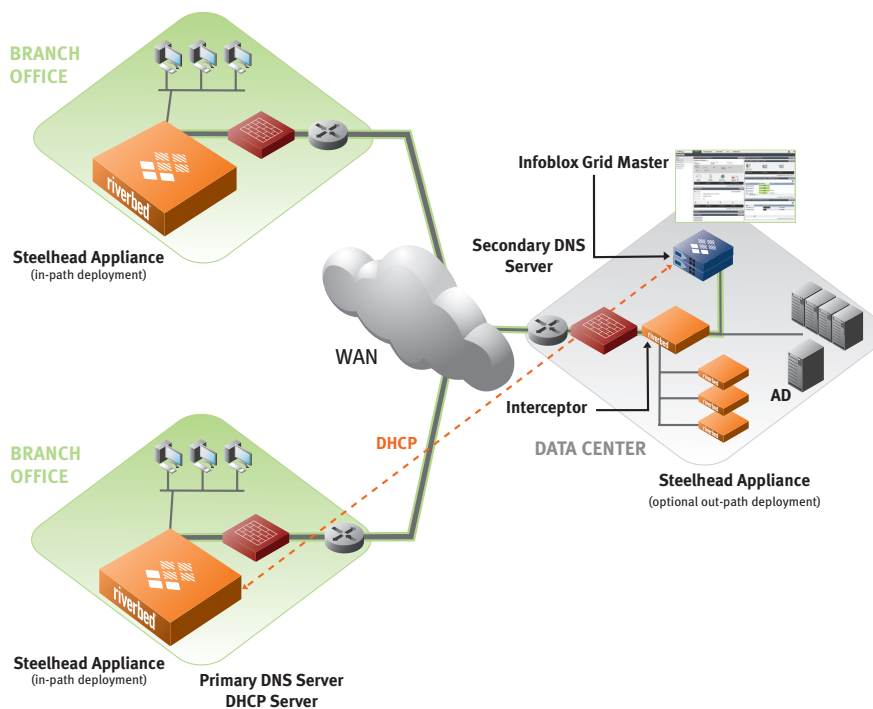


Figure 1: A topology highlighting DHCP failover across the LAN.

SOLUTION NOTE

The Infoblox and Riverbed Joint Solution

Riverbed and Infoblox combine to improve end-user experience with enhanced application performance and availability.

- Deliver DNS, DHCP and other services locally to increase network performance and availability
- Provide centralized, automated management for core network services
- Consolidate servers to reduce cost
- Improve security

Consolidate and Accelerate with Infoblox and Riverbed

Infoblox Trinzic Virtual Appliance software, running on Riverbed Steelhead appliances, delivers nonstop core network services, including:

- Naming services via Domain Name System (DNS);
- Addressing services via Dynamic Host Configuration Protocol (DHCP);
- Network visibility and control via IP address management (IPAM);
- File delivery services via Trivial File Transfer Protocol (TFTP) and FTP/HTTP;
- Logging services via Syslog and Syslog NG.

Infoblox Trinzic Virtual Appliance software running on Riverbed platforms can be combined with Infoblox hardware appliances into Infoblox grids. The patent-pending Infoblox Grid™ technology links distributed appliances into a unified, centrally managed system that shares a common, real-time distributed database. The Infoblox Grid uses secure communication among appliances using SSL and also uses sophisticated transaction management technology to maintain data integrity. This ensures that all appliances in the Grid have the right data and that the Grid continues to deliver services—without data loss or corruption—in the face of device or WAN failures. Infoblox Grid technology also supports intelligent data replication to minimize the use of bandwidth in the Grid and to enable “right-sized” appliances to be deployed at each location.

About Riverbed

Riverbed Technology is the performance leader in wide-area data service (WDS) solutions for companies worldwide. By enabling application performance over the wide area network (WAN) that is orders of magnitude faster than what users experience today, Riverbed is changing the way people work, and enabling a distributed workforce that can collaborate as if they were local. Additional information about Riverbed (Nasdaq: RVBD) is available at www.riverbed.com

About Infoblox

Infoblox appliances deliver utility-grade core network services, including domain name resolution (DNS), IP address assignment and management (IPAM/DHCP) and related services. Infoblox solutions, which provide the essential “glue” between networks and applications, are used by over 5,000 organizations worldwide. The company is headquartered in Santa Clara, Calif., and operates in more than 30 countries. For more information, call +1.408.625.4200, email info@infoblox.com or visit www.infoblox.com.